



Consuelo "Chelo" González Amézcuca
Flor de le, 1974
Ink on paper
15¾ × 11½ in (40 × 29.2 cm)
CA 18



Consuelo "Chelo" González Amézcuca
Filigree Fantasy, c. 1970–1986
Ink on paper
8 × 6¼ in (20.3 × 15.9 cm)
CA 19

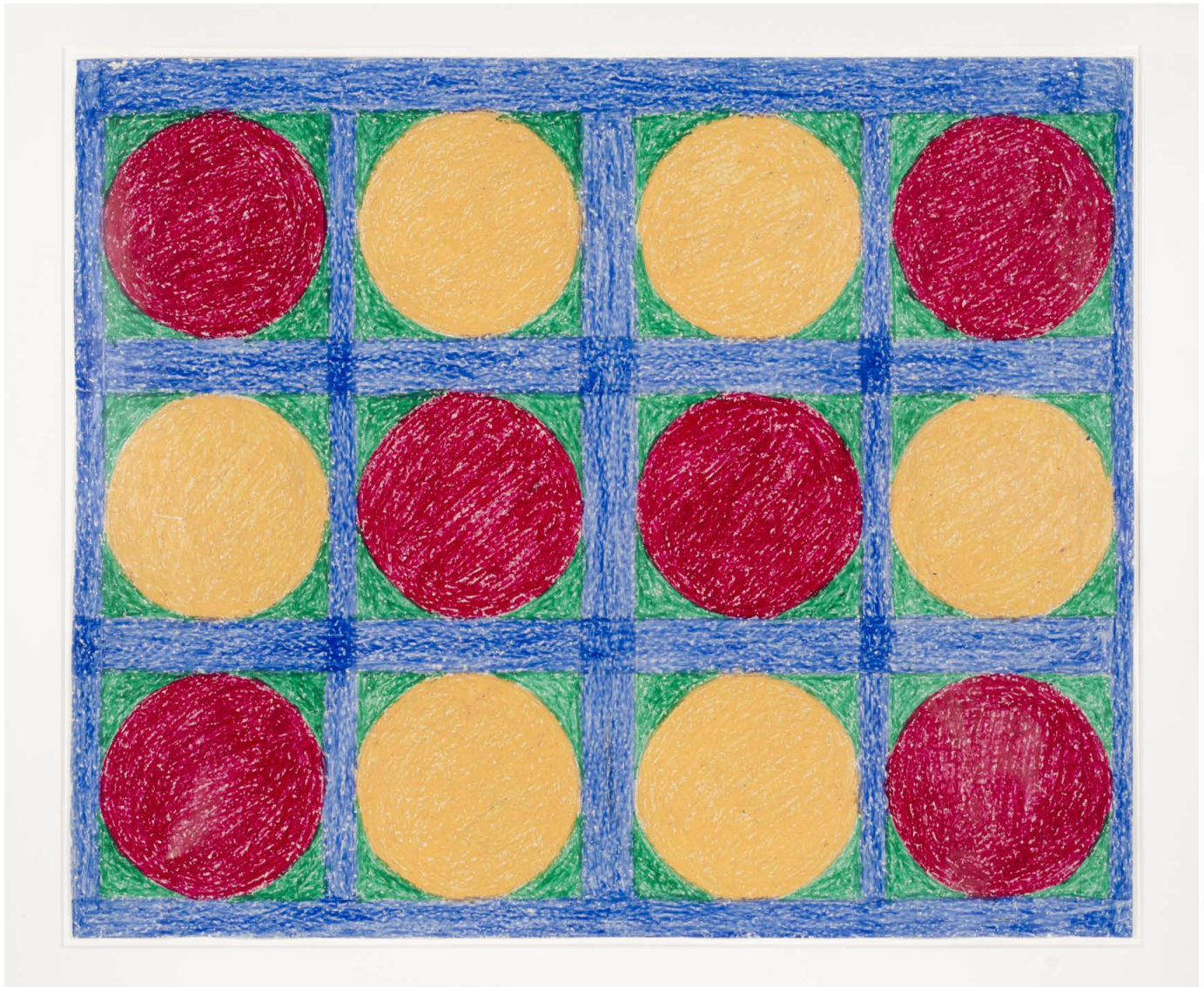


Eddie Arning
Volcano, c. 1965
Cray-pas on paper
16 × 22 in (40.6 × 55.9 cm)
EA 94





Eddie Arning
Rail Road Bridge, c. 1960–70
Crayon and pencil on paper
23¾ × 18¾ in (60.3 × 47.6 cm)
EA 106



Eddie Arning
Untitled (Red and yellow circles on blue), 1964
Crayon on paper
19 × 23 in (48.3 × 58.4 cm)
EA 181



William Edmondson
Untitled (Little Lady), c. 1932–47
Tennessee Limestone
12½ × 3¼ × 7 in (31.8 × 8.3 × 17.8 cm)
WE 66





William Edmondson
Untitled (Bird), c. 1930
Limestone
13 $\frac{1}{8}$ × 9 × 3 in (33.3 × 22.9 × 7.6 cm)
WE 67





Dorothy F. Foster
Crab Apples, c. 1970–1986
Ballpoint pen on found coated paper
7¾ × 6⅛ in (19.7 × 15.6 cm)
FOST 298



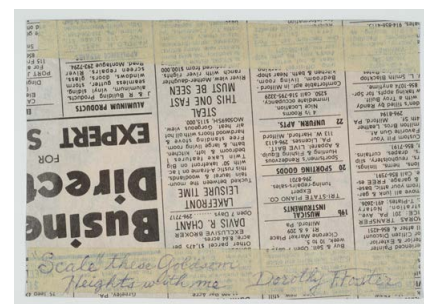


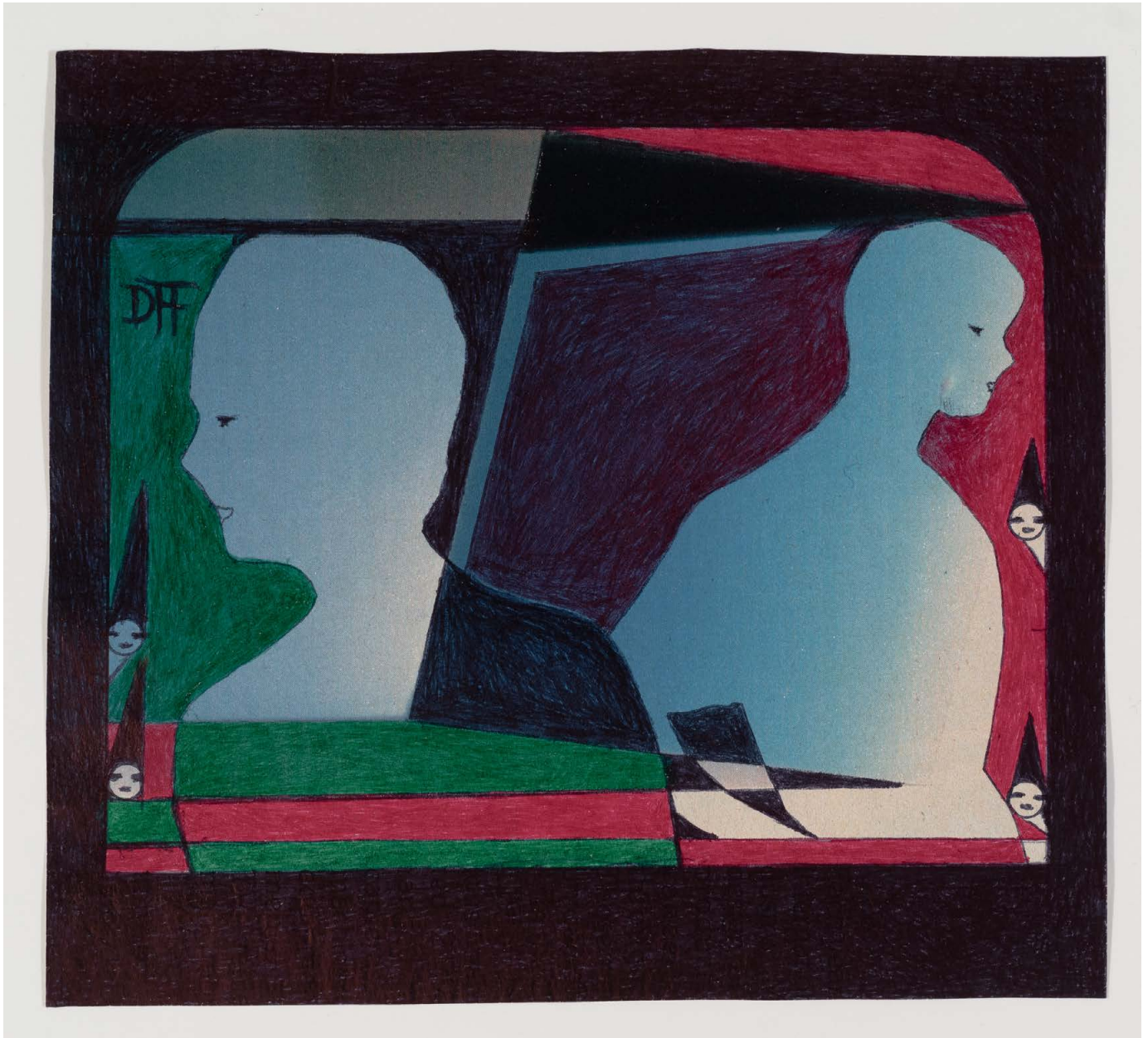
Dorothy F. Foster
True Blue (Dream), c. 1970–1986
Ballpoint pen on found newsprint
5 1/8 x 3 5/8 in (13 x 9.2 cm)
FOST 346





Dorothy F. Foster
"Scale" these godsome heights with me, c. 1970-1986
Ballpoint pen on found newspaper
4 7/8 x 6 1/2 in (11.7 x 16.5 cm)
FOST 395





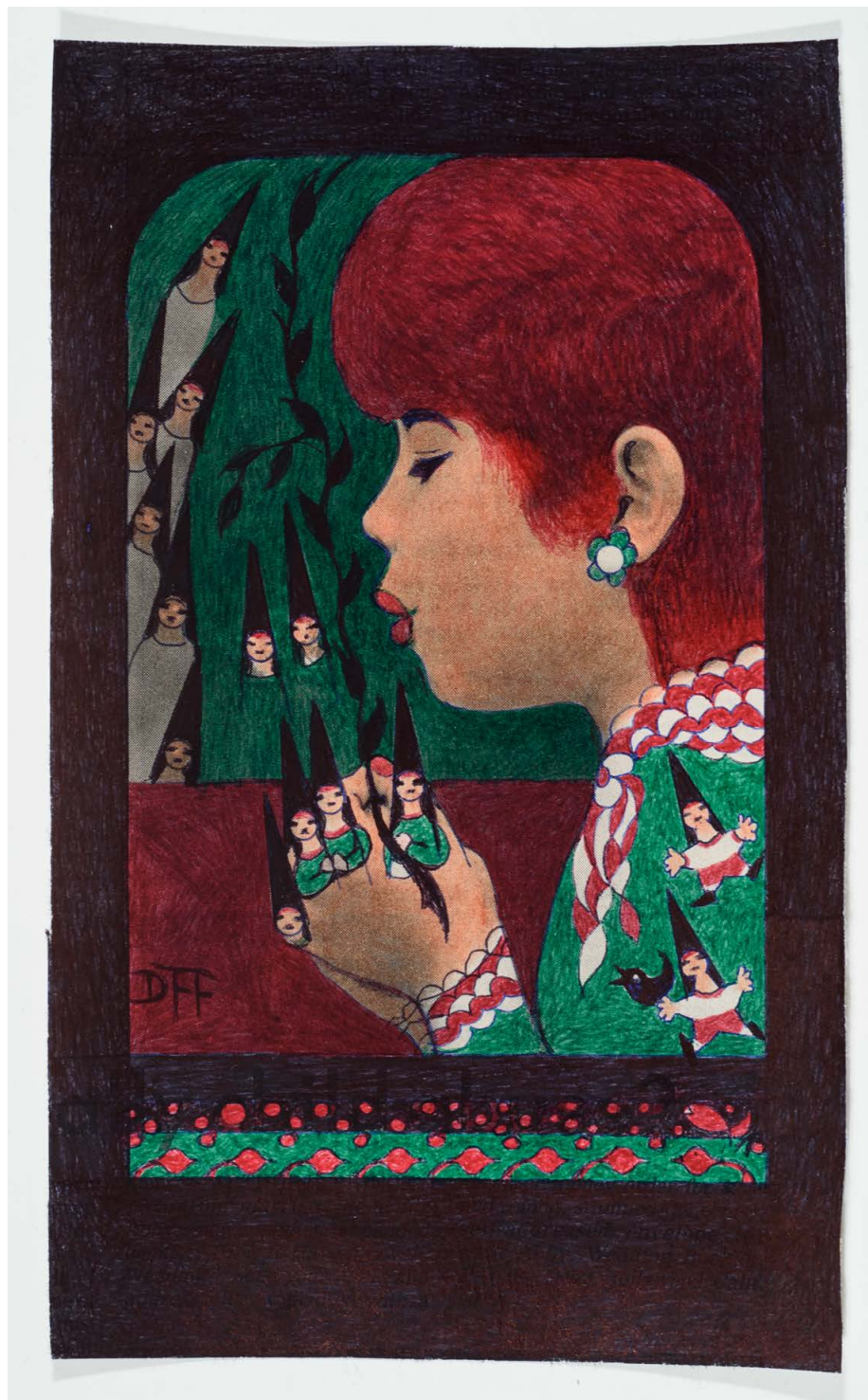
Dorothy F. Foster
indifference? - no -- differences, c. 1970-1986
Ballpoint pen on found magazine paper
5 $\frac{1}{8}$ × 5 $\frac{5}{8}$ in (13 × 14.3 cm)
FOST 399





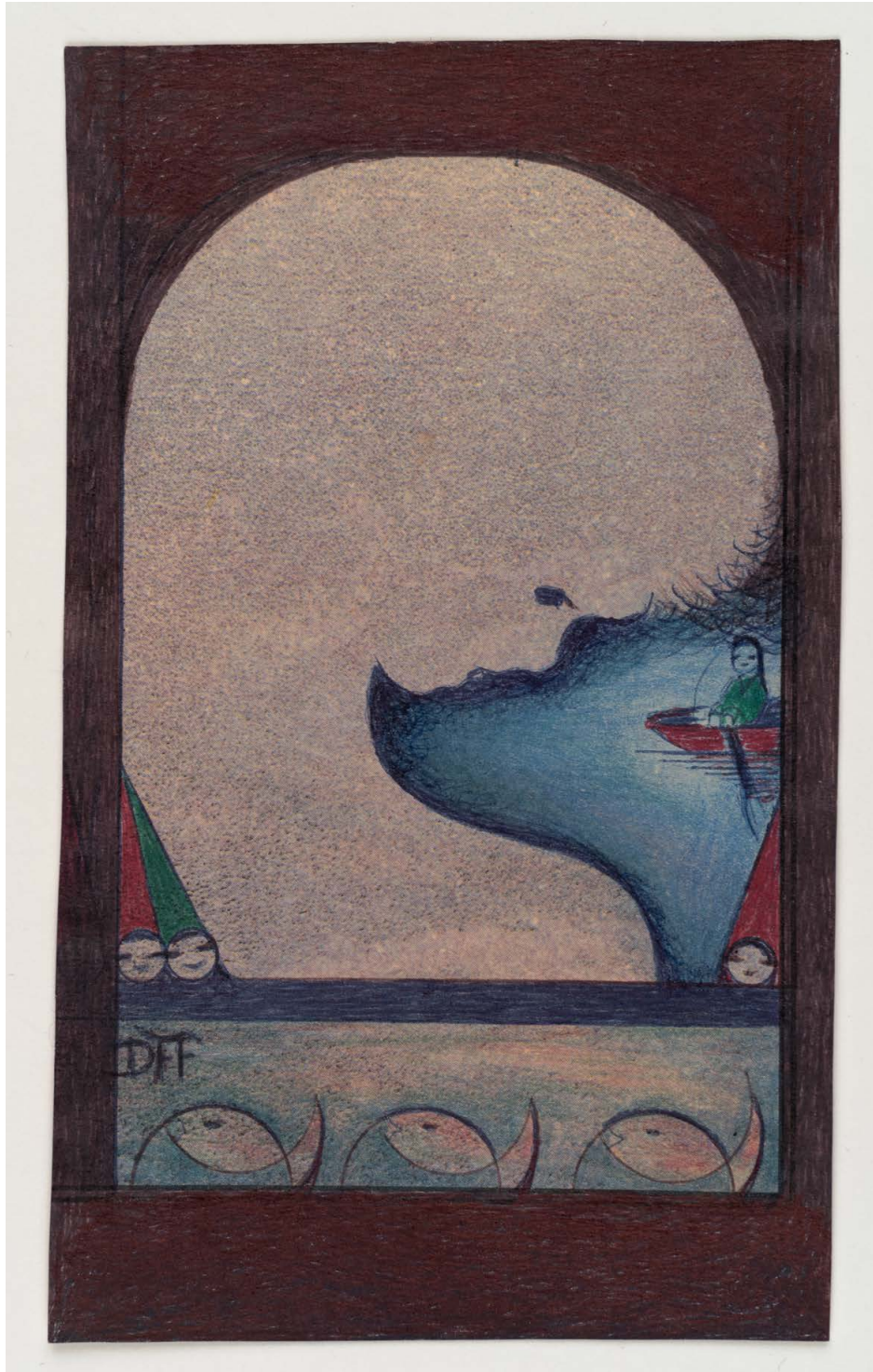
Dorothy F. Foster
"Mystical" bodies - emotional overtones, c. 1970–1986
Ballpoint pen, colored pencil, and graphite on found
newsprint
5 × 6 in (12.7 × 15.2 cm)
FOST 459



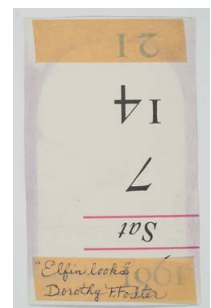


Dorothy F. Foster
Cherishing, c. 1970–1986
Ballpoint pen and graphite on found newsprint
8½ × 5½ in (21.6 × 13 cm)
FOST 483



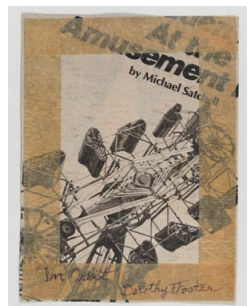


Dorothy F. Foster
Elfin looks, c. 1970–1986
Ballpoint pen on found paper
5 × 3 in (12.7 × 7.6 cm)
FOST 619





Dorothy F. Foster
In Orbit, c. 1970–1986
Ballpoint pen and colored pencil on found newsprint
6 × 4½ in (15.2 × 11.4 cm)
FOST 702





Dorothy F. Foster
Sepia Sequence, c. 1970–1986
Ballpoint pen on found magazine paper
5¾ × 4¾ in (14.6 × 11.1 cm)
FOST 709





Dorothy F. Foster
They Bless + Burn, c. 1970–1986
Ballpoint pen and colored pencil on found newsprint
7¼ × 6 in (18.4 × 15.2 cm)
FOST 957



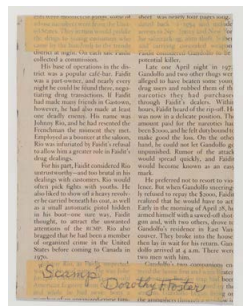


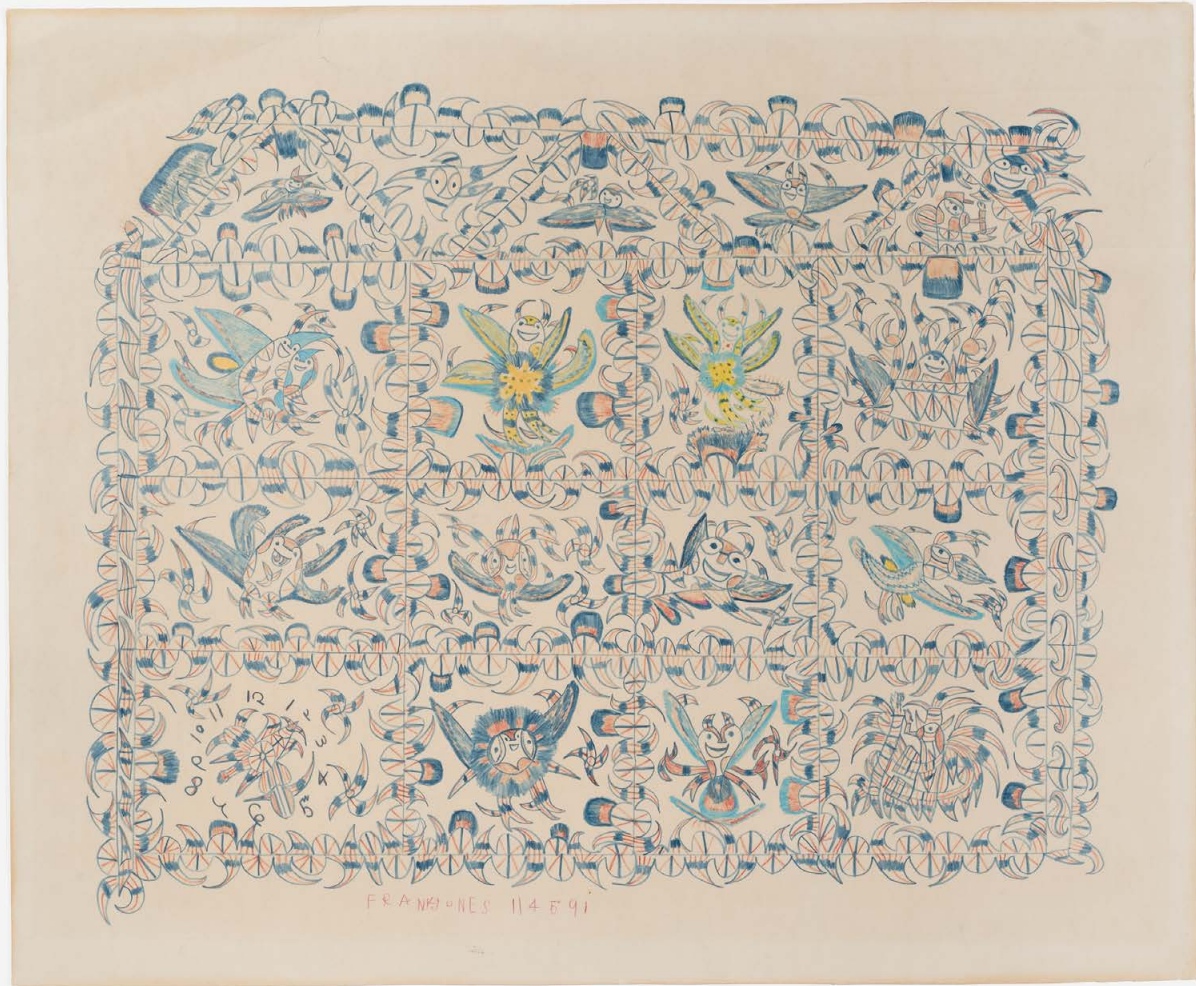
Dorothy F. Foster
Pet Acquires Pet Shop, c. 1970–1986
Ballpoint pen and colored pencil on found coated newsprint
6¾ × 5⅞ in (17.1 × 13 cm)
FOST 965





Dorothy F. Foster
Scamp, c. 1970–1986
Ballpoint pen, colored pencil, and graphite on found
magazine paper
6 × 4 $\frac{5}{8}$ in (15.2 × 11.7 cm)
FOST 997





Frank Jones
Untitled (Yellow Devils), c. 1960
Colored pencil on paper
20½ × 24¾ in (52.1 × 62.9 cm)
FJ 28



George T. López
Adam and Eve, 1983
Carved wood
16 × 36 × 14 inches (3 pieces)
GL I





George T. López
Humming Birds, c. 1980s
Carved cottonwood
15 × 14 × 6 in (38.1 × 35.6 × 15.2 cm)
GL 3





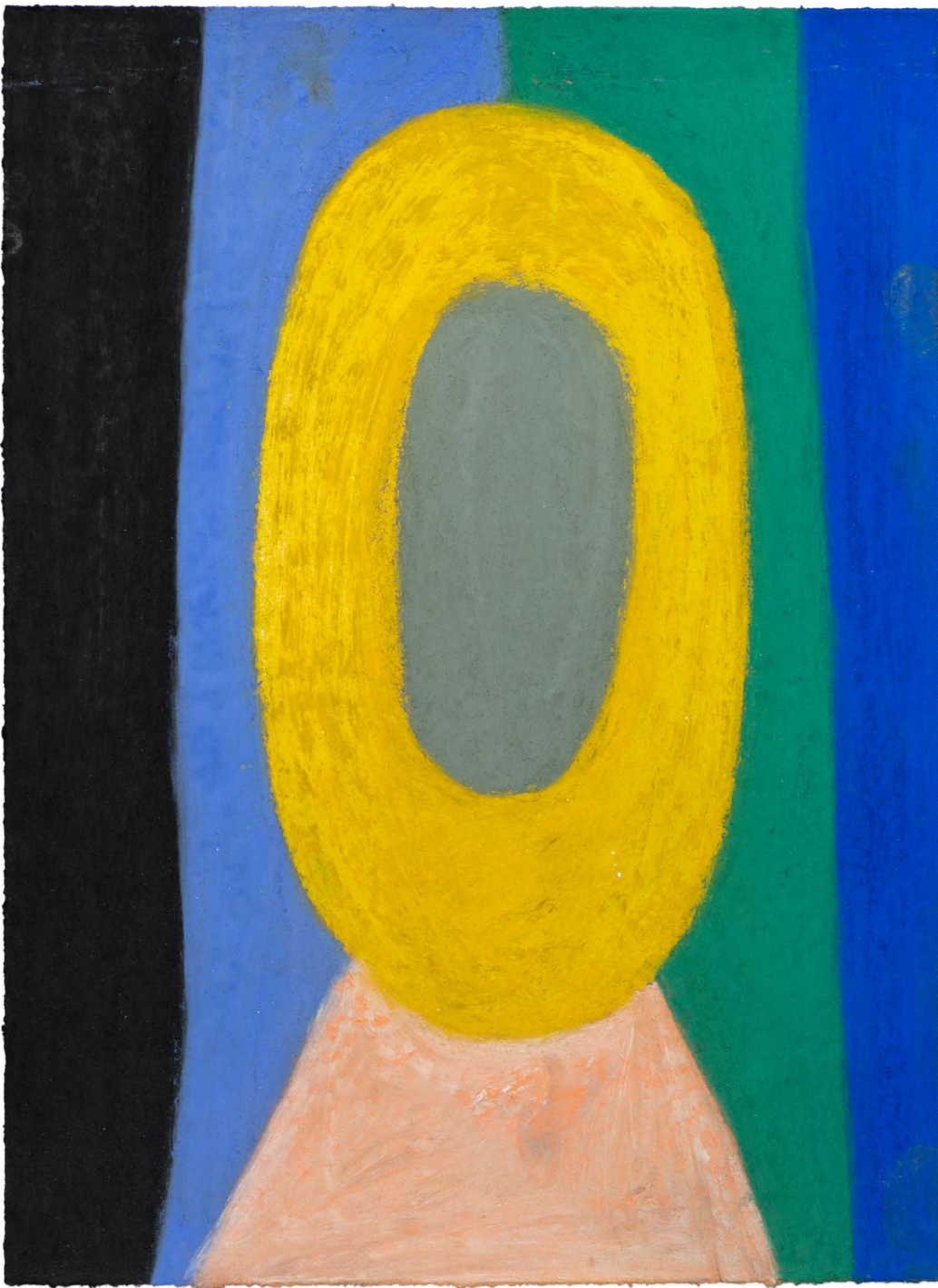
Julian Martin
Untitled, 2018
Pastel on paper
14¾ × 11¼ in (37.5 × 28.6 cm)
JMART 263



Julian Martin
Untitled, 2022
Pastel on paper
15 × 11 in (38 × 28 cm)
JMART 325



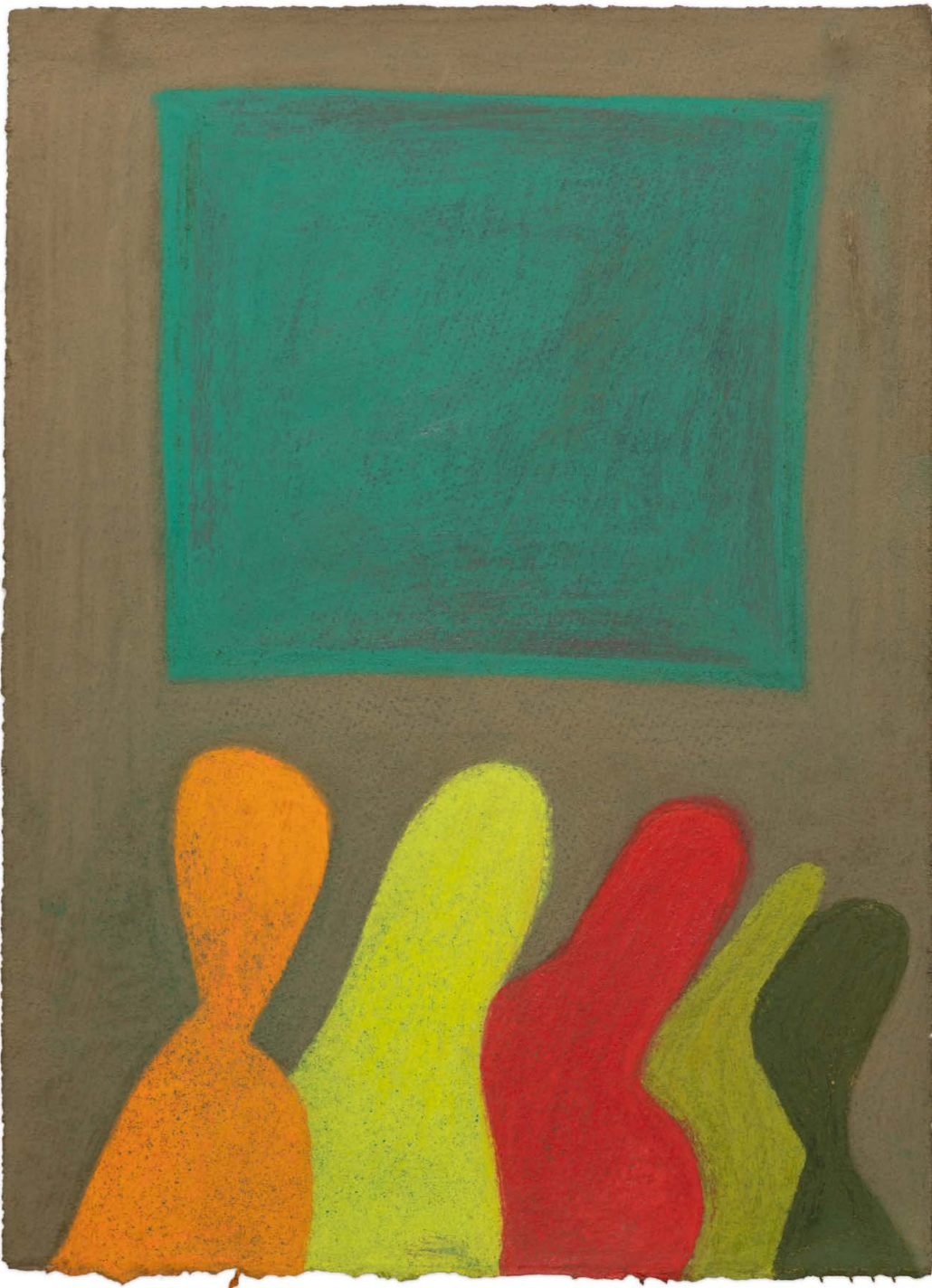
Julian Martin
Untitled, 2022
Pastel on paper
15 × 11 in (38 × 28 cm)
JMART 329



Julian Martin
Untitled, 2022
Pastel on paper
15 × 11 in (38 × 28 cm)
JMART 330



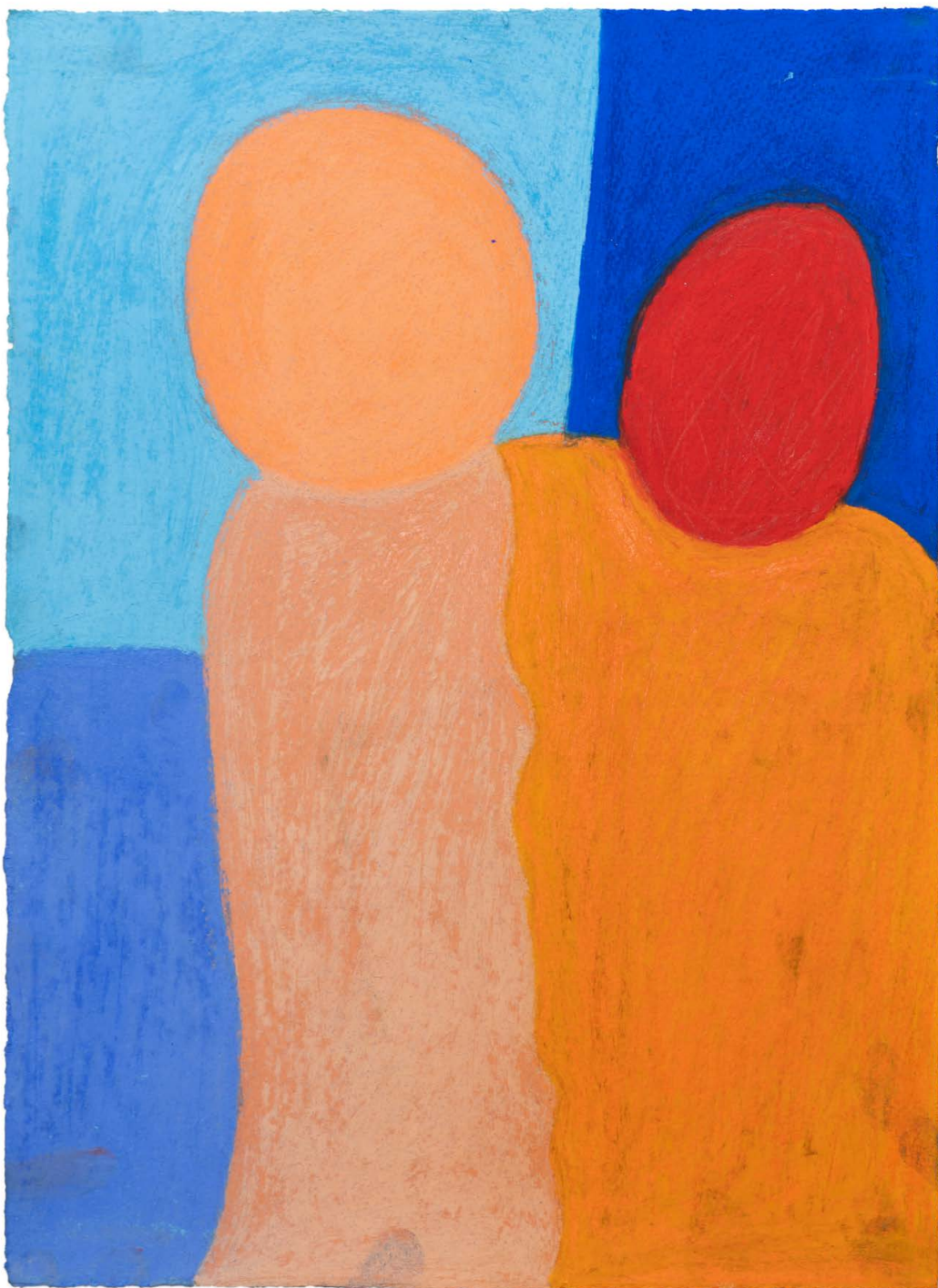
Julian Martin
Untitled, 2022
Pastel on paper
15 × 11 in (38 × 28 cm)
JMART 331



Julian Martin
Untitled, 2022
Pastel on paper
15 × 11 in (38 × 28 cm)
JMART 332



Julian Martin
Untitled, 2022
Pastel on paper
15 × 11 in (38 × 28 cm)
JMART 333



Julian Martin
Anne Hathaway, Red Carpet, 2022
Pastel on paper
15 × 11 in (38 × 28 cm)
JMART 335



Elijah Pierce
Christ Entering Jerusalem, 1942
Enamel and glitter on carved wood
5 × 12½ × 10 in (12.7 × 31.8 × 25.4 cm)
EPI 46



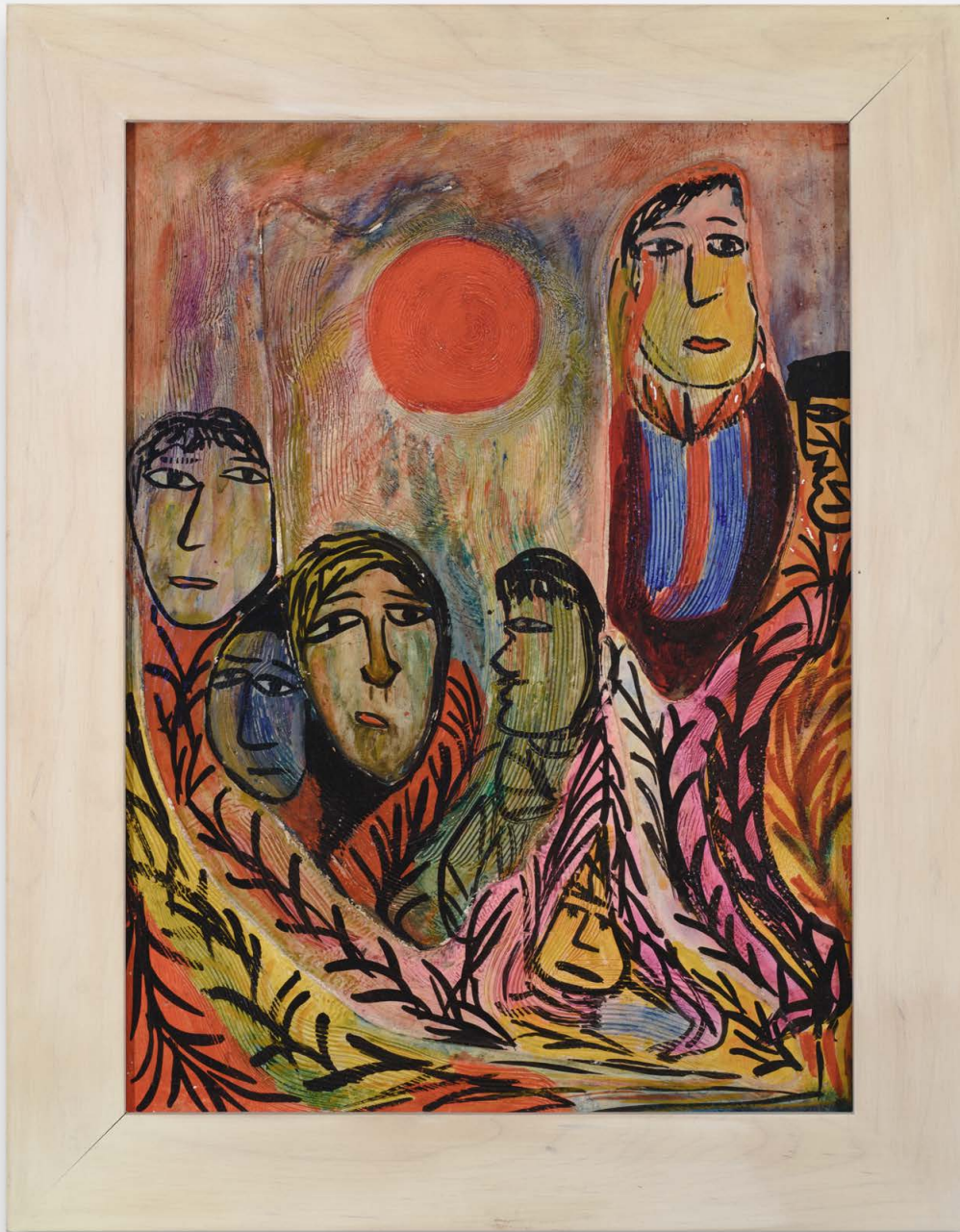


Elijah Pierce
Untitled (Spotted animal), c. early 1970s
Enamel, rhinestones, hair on carved wood
4½ × 10¾ × 2½ in (11.4 × 27.3 × 6.4 cm), double-sided
EPI 47





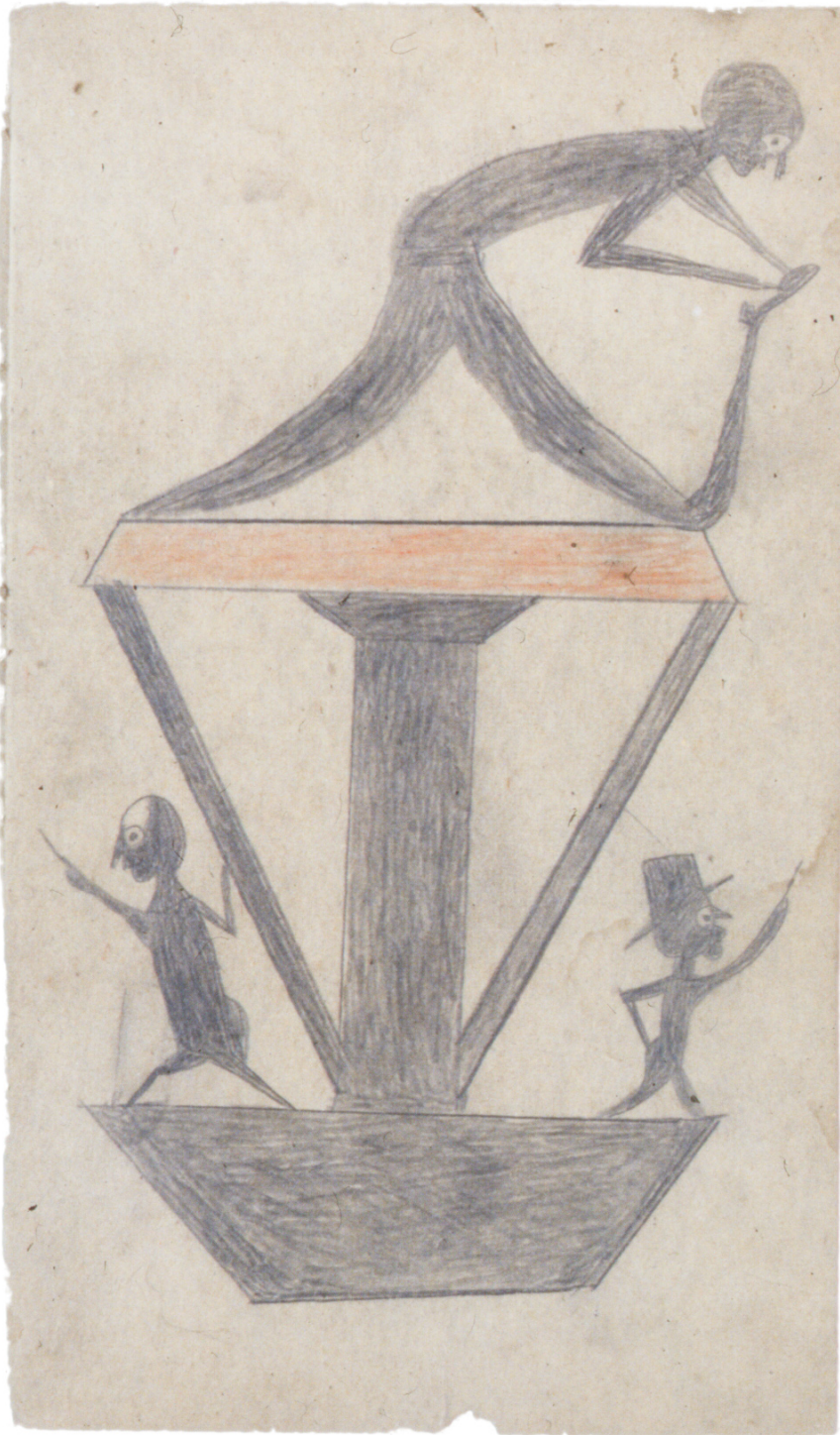
Martín Ramírez
Untitled (Skeleton), c. 1948–63
Crayon and pencil on pieced paper
81½ × 34½ in (207 × 87.6 cm)
MR 56



Janet Sobel
Untitled, c. 1944
Mixed media on panel
17¾ × 13¼ in (45.1 × 33.7 cm)
SOBE I



Janet Sobel
Untitled, c. 1945
Mixed media on canvas board
20 × 16 in (50.8 × 40.6 cm)
SOBE 2



Bill Traylor
Untitled (Figures/Construction), c. 1939–42
Colored pencil and graphite on cardboard
11¾ × 7 in (29.8 × 17.8 cm)
BT 121



Bill Traylor
Untitled (Brown horse), c. 1939–42
Poster paint, pencil on cardboard
12 $\frac{3}{8}$ × 15 in (31.5 × 38.1 cm)
BT 134



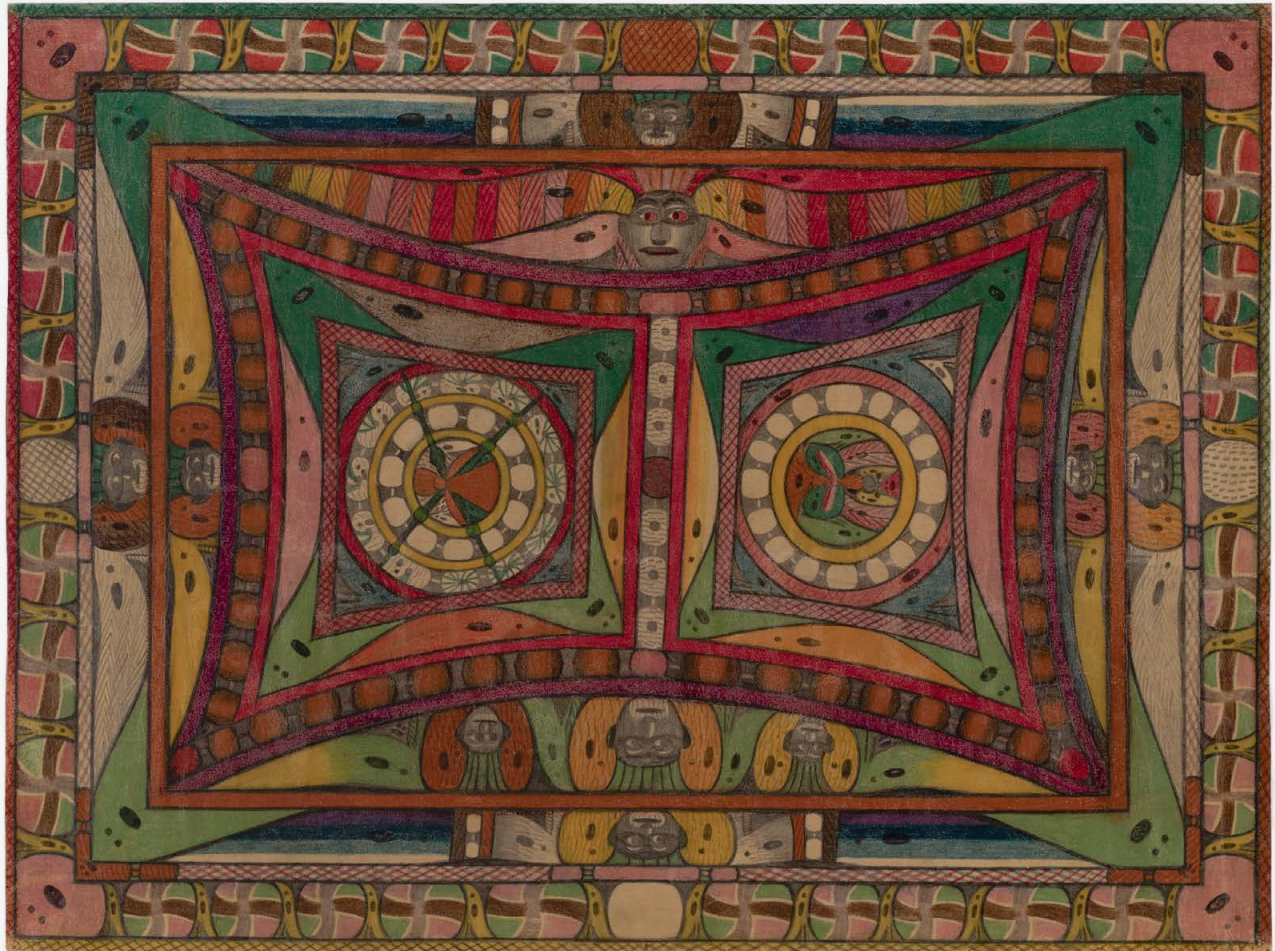


Bill Traylor
Untitled (Man with Blue Pants and Cane), c. 1939/41
Poster paint and pencil on found paper
11 × 8 in (27.9 × 20.3 cm)
BT 138

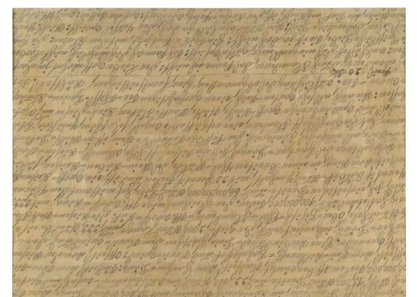


Bill Traylor
Boxers, c. 1939–42
Poster paint on cardboard
20 $\frac{7}{8}$ × 22 in (74.3 × 76.8 cm)
BT 144



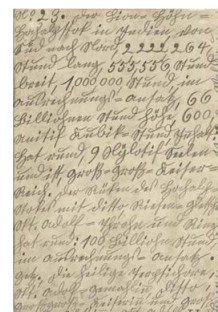


Adolf Wölfli
Untitled (St. Adolf), c. 1922–25
Crayon, colored pencil, pencil on paper
19 $\frac{7}{8}$ × 26 $\frac{3}{8}$ in (50.5 × 67.0 cm), double-sided
AWO 9





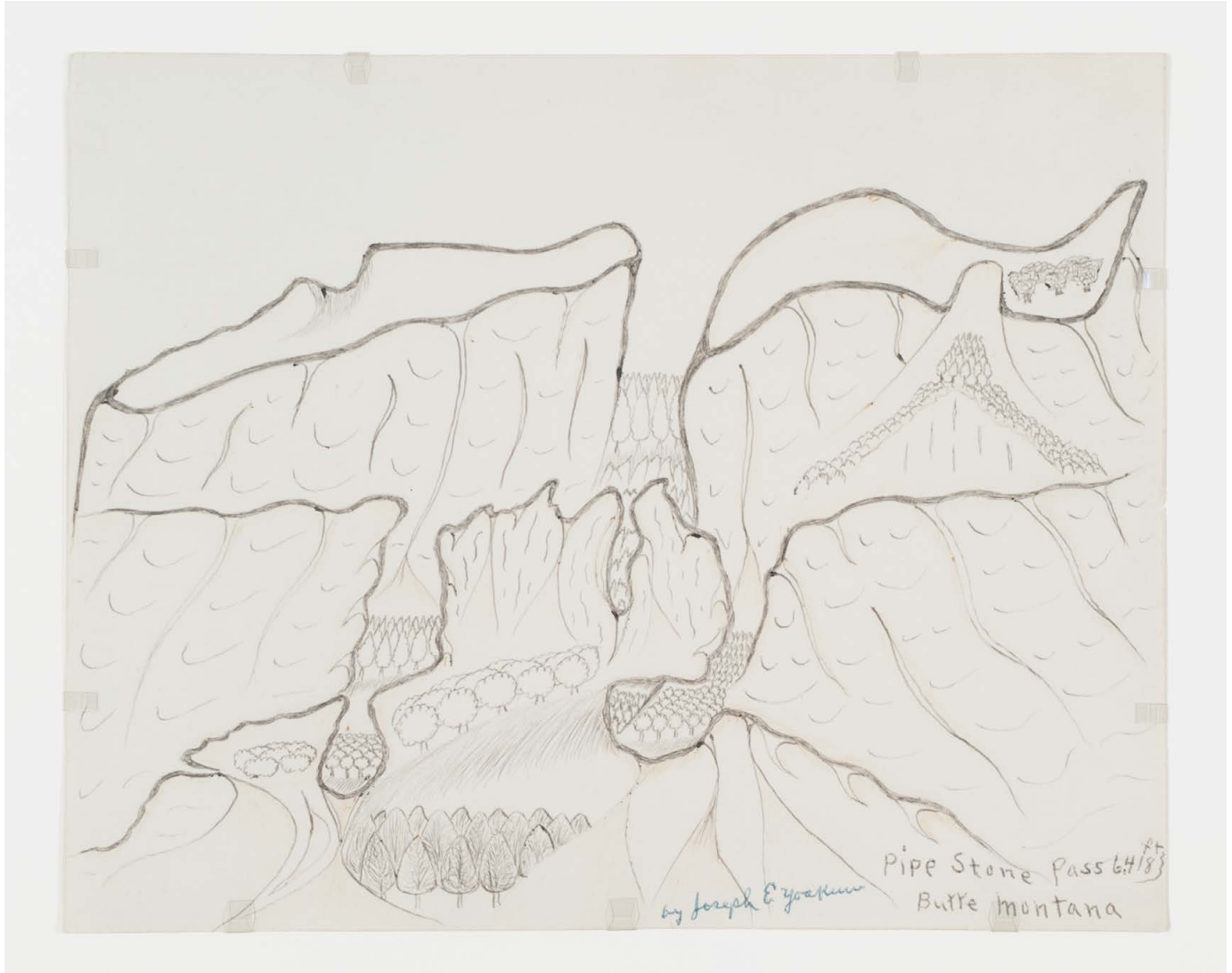
Adolf Wölfli
Untitled, c. 1920
Colored pencil on paper
13¾ × 8¾ in (34.9 × 22.2 cm), double-sided
AWO 10





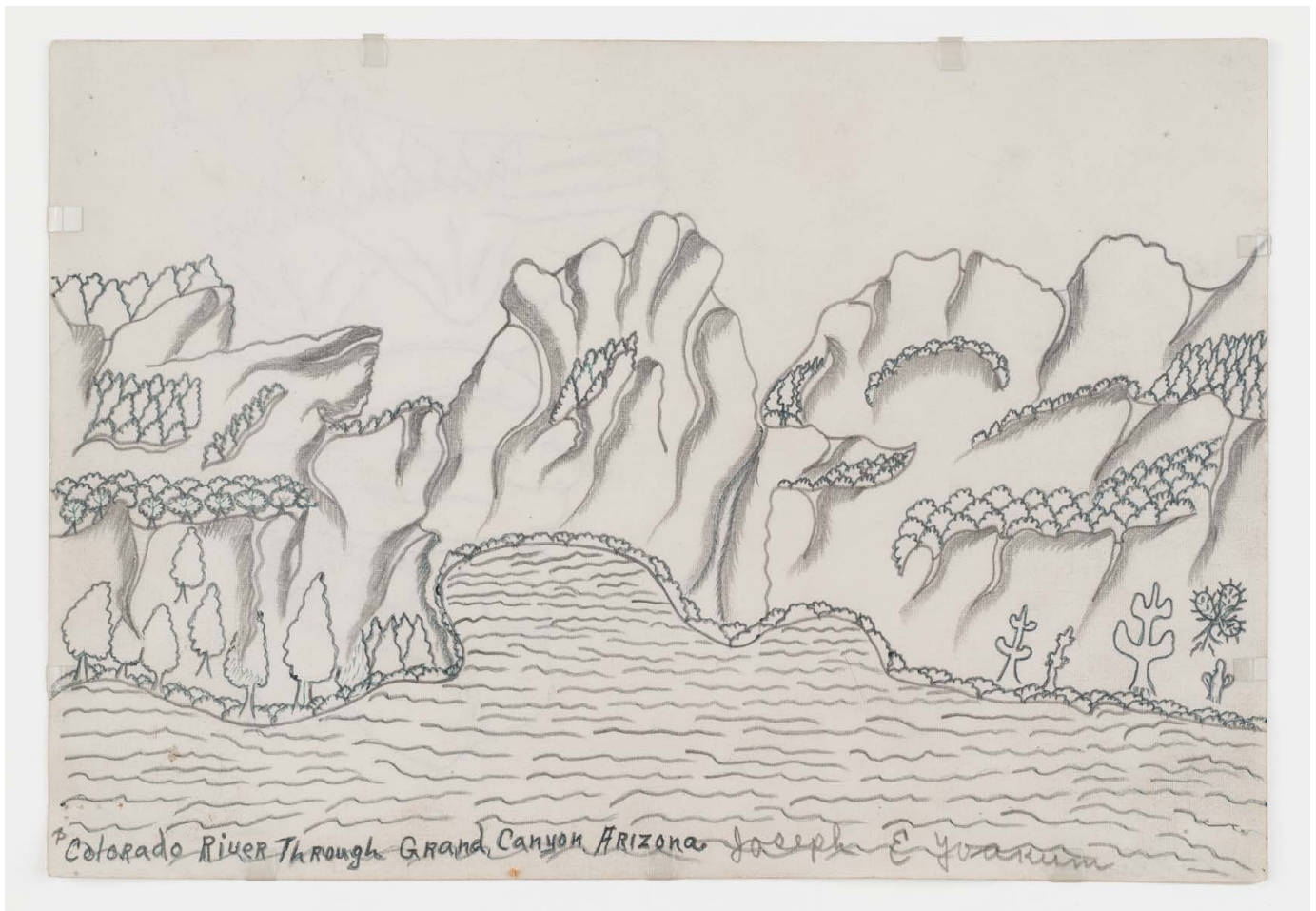
Joseph Yoakum
Mt [illegible] of Alps of New Zealand, January 7, 1970
Colored pencil, watercolor, and ballpoint pen on paper
19 × 12 in (48.3 × 30.5 cm)
JY 150





Joseph Yoakum
Pipe Stone Pass, Burre Mountain, n.d.
Colored pencil and ballpoint on paper
8 × 10 in (31.8 × 48.3 cm)
JY 151





Joseph Yoakum
Colorado River, Grand Canyon Arizona, n.d.
Colored pencil and ballpoint on paper
7½ × 10½ in (19.1 × 26.7 cm)
JY 152





Joseph Yoakum
*The Home of Wm F Cody Buffalo Bill near Town of North Platte
Nebraska, n.d.*
Blue fountain pen, blue ballpoint pen, pastel, and colored
pencil on paper
12 × 18 in (30.5 × 45.7 cm)
JY 153





Joseph Yoakum
Coolee Dam on Columbia River near Olympia Wash, n.d.
Watercolor and graphite pencil on paper
9 × 12 in (22.9 × 30.5 cm)
JY 154





Joseph Yoakum
Wahoo Valley near Holdenville Oklahoma, n.d.
Blue ballpoint pen and watercolor on paper
8 × 10 in (20.3 × 25.4 cm)
JY 155



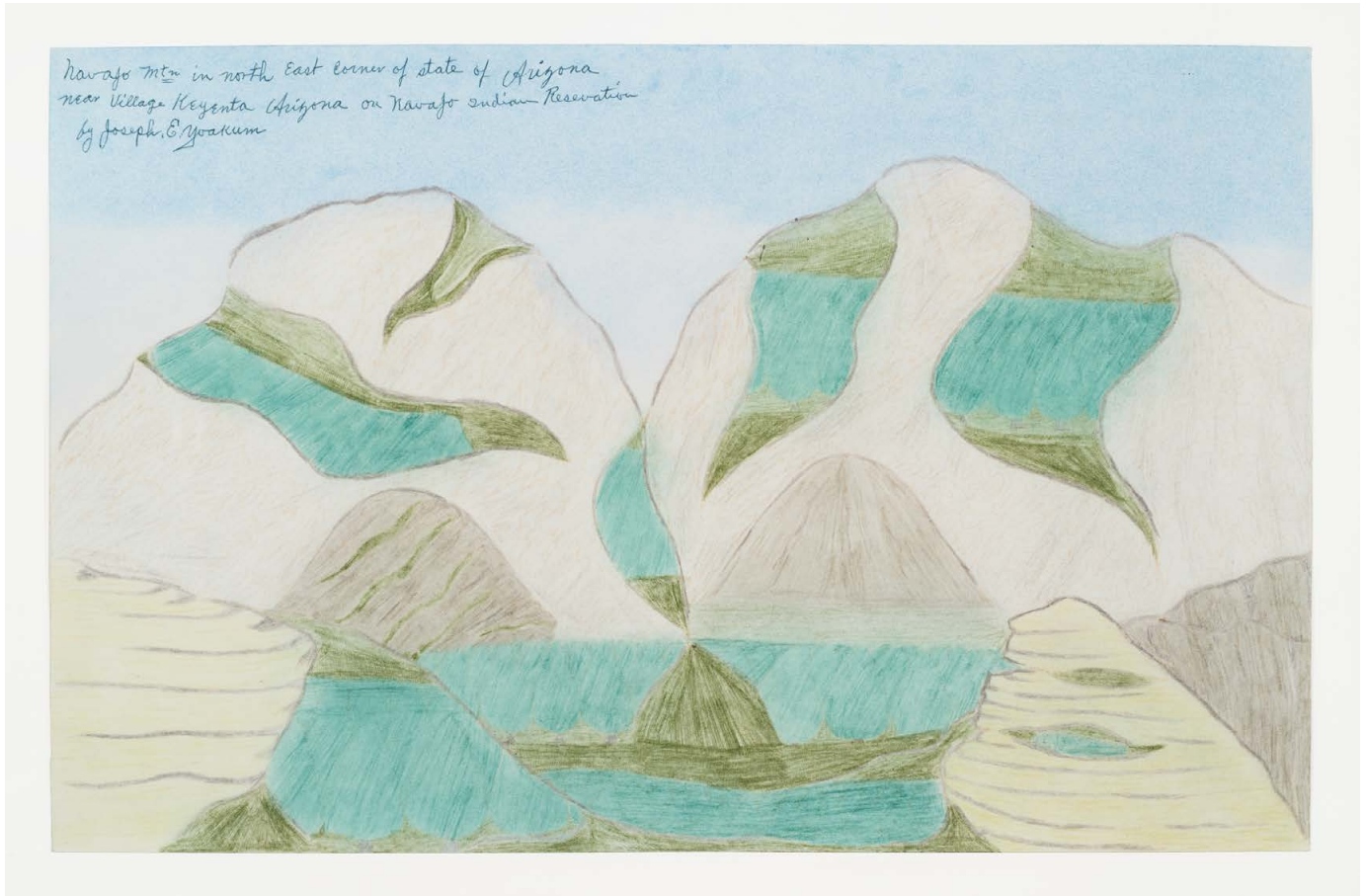


Joseph Yoakum
Prairie Mounds of Central Nebraska, n.d.
Colored pencil and ballpoint on paper
12 × 19 in (30.5 × 48.3 cm)
JY 156



Joseph Yoakum
Big Smokey Range, South usa, n.d.
Colored pencil and ballpoint on paper
7 × 10½ in (17.8 × 26.7 cm)
JY 157

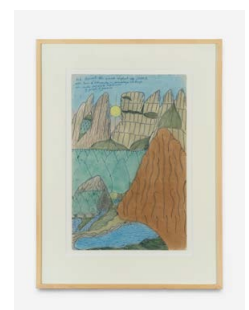




Joseph Yoakum
Navajo Mtn in north east corner of state of Arizona near village,
n.d.
Colored pencil and ballpoint on paper
12½ × 19 in (31.8 × 48.3 cm)
JY 158



Joseph Yoakum
Mr. Everest, the worlds highest mt., n.d.
Colored pencil, ballpoint pen on paper
19½ × 12¾ in (49.5 × 32.4 cm)
JY 159





Purvis Young
Untitled (Three black figures), c. 1980s
Housepaint on oilcloth
62 × 21 in (157.5 × 53.3 cm)
PY 6



Purvis Young
Guiding Light, c. 1980s
Paint on wood
39½ × 30 in (100.3 × 76.2 cm)
PY 702



Purvis Young
Untitled (Constellation), c. 1980s
Paint on paper
21½ × 14 in (54.6 × 35.6 cm)
PY 718

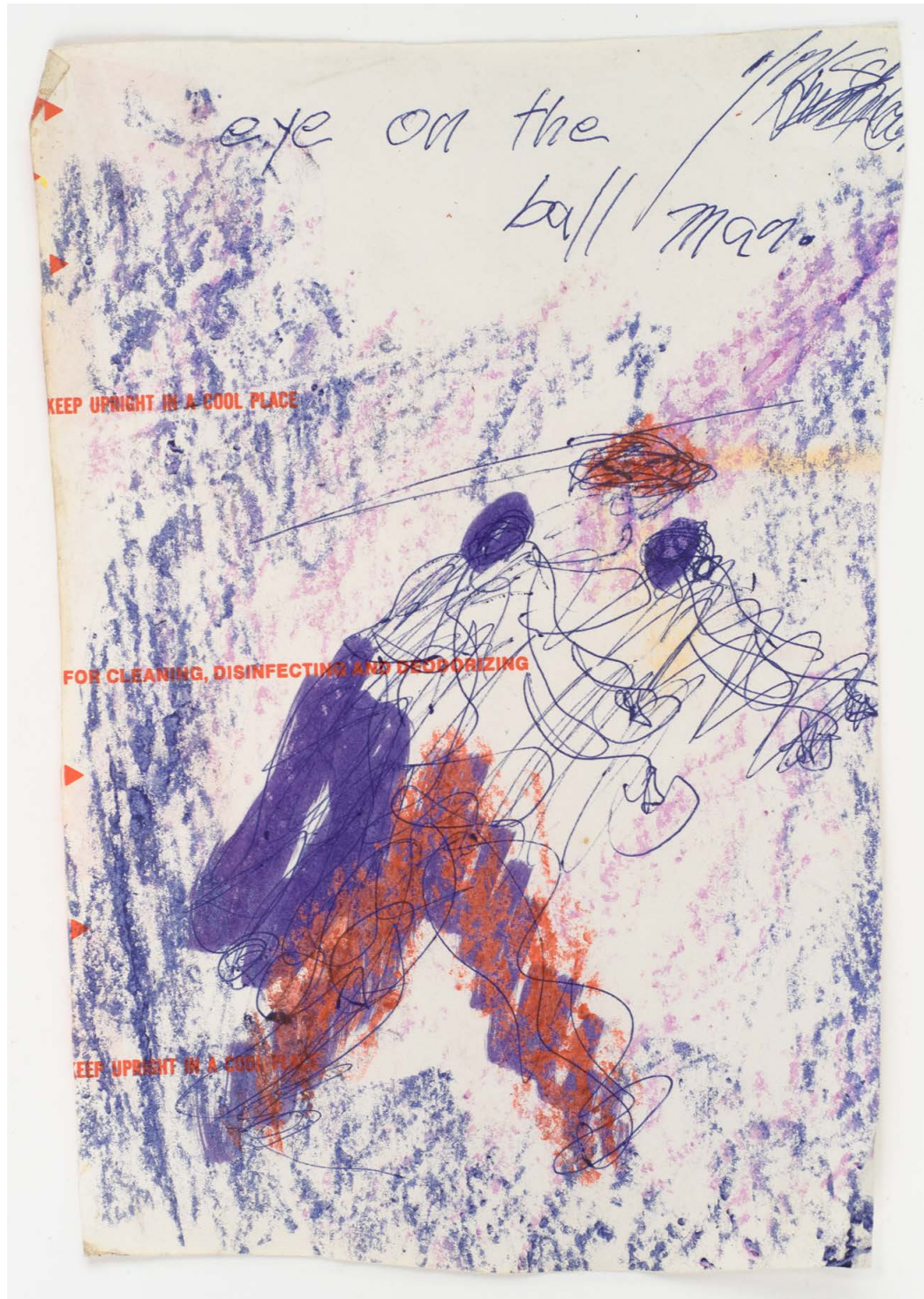


Purvis Young
Untitled (Angels, figures), c. 1980s
Paint, crayon & ink on paper
47 × 24 in (119.4 × 61 cm)
PY 973



Purvis Young
Untitled (Book), c. 1974–77
Drawings collaged on bound book pages
9½ × 7½ × 5½ in (24.1 × 19.1 × 14 cm)
PY 2402





Purvis Young
Eye on the Ball, c. 1980s
Mixed media on paper
8¾ × 6¼ in (22.2 × 15.9 cm)
PY 2403



Purvis Young
Untitled (Horses), c. 1980s
Paint on manila folders
18¼ × 27¾ in (46.4 × 70.5 cm)
PY 2406



Purvis Young
Drive Safe, c. 1980s
Paint, mixed media on cardboard
28¼ × 22¾ in (71.8 × 56.8 cm)
PY 2407



Purvis Young
Untitled (Two figures with basketball), c. 1980s
Mixed media on paper
8 × 6 in (15.6 × 11.4 cm)
PY 2408





Carlo Zinelli
Untitled, c. 1960
Mixed media on paper
28 × 20 in (71.1 × 50.8 cm), double-sided
CZIN 4

